



ATS LASER
The ultimate solutions people!



COMPANY PROFILE

Founded in 2010 by Mr. Anand Eldandi, ATS Laser has been consistently providing services and supplying Co2 Laser cutting and engravers, Co2 Laser Marking Machine, CNC Routers, Fiber Laser Metal Marking Machine, Fiber Laser Metal Cutting Machine and equipment/spares from high end to the medium range machinery as per the requirement of clients. Over the period ATS Laser has earned the position of being the best service provider in the industry. It carries a reputation of addressing the client issues within 24 hours of notification and 48 hours in case of outstation. It is the trust of the clients in ATS Laser that it has grown manifold and have satisfied client base of more than 5000 customers.

Starting with a small office in Mumbai, ATS has reached PAN India clients and now have set its foot in Dubai and experiencing the same response as in India.

Our laser system and service helps to maintain competitive advantages. With our industrial experience and skills, we offer comprehensive solutions to all range of customers. ATS Laser has always kept pace with the technological advancements and upgrades in Laser cutting technology. Evidently, we have been always committed to providing most innovative products and services for laser equipment and other applications.

ATS Laser has also proved its mettle in giving customized solutions / modifying machines and refurbishing used machines.



OUR STRENGTH

- Latest machines in Laser cutting systems.
- Readily available stock for supply whether it be fast moving Machinery or Spares.
- Dedicated team of experienced engineers.
- Committed to provide solutions.
- Providing solutions at minimal cost



PRODUCTS

- **Co2 Laser cutting and engravers**
- **Co2 Laser Marking Machines**
- **CNC Routers**
- **Fiber Laser Metal Marking Machines**
- **Fiber Laser Metal Cutting Machines (Pipe cutting and Conveyor sheet)**
- **Accessories and spares**

SERVICES

- **Repairs and Maintenance**
- **Refurbishing Machines**
- **Machine Retrofitting**
- **Annual maintenance contract**

Co2 Laser cutting and engravers

Models

Model no	Size	Specialty	Application
ATS 3030	1' x 1'	High Speed Engraving & Cutting	Non-metal
ATS 6040	1.5' x 2'	High Speed Engraving & Cutting	Non-metal
ATS 1060A (Single Head)	2'x3'	High Speed Cutting & Engraving	Non-metal
ATS 1390A (Single Head)	3'x4'	High Speed Cutting & Engraving	Non-metal
ATS 1390 BH (Double Head)	3'x4'	High Speed Cutting & Engraving	Non-metal
ATS 1325	8'x4'	Large format laser cutting	Non-metal
1610 DH (Double head)	5'x3'	Large format double head laser cutting	Fabric cutting
1390 DH (Double head)	3'x4'	Double head laser cutting	Non-metal
1810 DR (Double Axis, double Head)	6'x4'	Double head with individual Axis	Non-metal

ATS3030/ATS 6040

High Speed Cutting & Engraving



ATS3030 /ATS 6040A

Technical Specifications

- Working area : 300X300 / 600mm x 400mm
- Ruida RDC 6445G with High Memory *Latest High Speed controller* with color Display & Software
- 40W/80W CO2 sealed glass laser tube.
- Laser power supply 40W/80W *with thermostat*
- US lenses & Silver *Metal Mirror*
- Water cooling system *with latest Technology*
- High Speed Stepper Motor lead shine
- DSP offline control with USB Interface
- High speed Synchronization
- Linear Transmission Mechanism
- S&A CW 3000: Industrial chiller
- *Special SS Profile used for X & Y Motion*
- *Special Sell Doors for Mechanism tuning*
- Engraving speed 0-1700mm/sec
- Cutting speed 0-600mm/sec

Accessories: Blower & Compressor

ATS 1060A

Single Head and Double Head Laser Cutting And Engraving Machine



ATS 1060A

Technical Specifications

- Working area : 1000mm x 600mm
- Ruida RDC 6445G with High Memory *Latest High Speed controller* with color Display & Software
- Reci T2 90W CO2 sealed glass laser tube.
- Laser power supply 80W *with thermostat*
- US lenses & Silver *Metal Mirror*
- Water cooling system *with latest Technology*
- High Speed Stepper Motor lead shine
- DSP offline control with USB Interface
- High speed Synchronization
- Linear Transmission Mechanism
- CW 5200: Industrial chiller with refrigeration system
- *Special SS Profile used for X & Y Motion*
- *Special Sell Doors for Mechanism tuning*
- Engraving speed 0-1200mm/sec
- Cutting speed 0-600mm/sec

Accessories: Blower & Compressor

ATS 1390A (Single Head)



Imp Note: This model is specially designed to convert from Single head laser Machine to Double Head laser. This is inbuilt provision provided by the OEM

ATS 1390A

Technical Specifications

- Working area : 1300mm x 900mm
- Ruida RDC 6445G with High Memory *Latest High Speed controller.*
- Big screen color display with extra additional features
- Software inclusive of special addition for photo engraving
- 100W_REC1 W4 CO2 sealed glass laser tube.
- Laser power supply 100W *with thermostat*
- US lenses & Imported Silver *Metal Mirror*
- Water cooling system *with latest Technology*
- High Speed Stepper Motor lead shine
- DSP offline control with USB & Lan Interface
- High speed Synchronization Linear Transmission Mechanism
- S & A CW 5200: Industrial chiller with refrigeration system
- *Special U-Shape SS Profile used for X & Y Motion*
- *Special Shell Doors for Mechanism tuning with sensors*
- Engraving speed 0-1200mm/sec
- Cutting speed 0-600mm/sec
- Maintenance tool box.
- Separate tray for using honeycomb & knife table with extra knife for support.

Accessories: Blower & Compressor

Imp Note: This model is specially designed to convert from Single head laser Machine to Double Head laser. This is inbuilt provision provided by the OEM

ATS 1390 BH (Double Head)



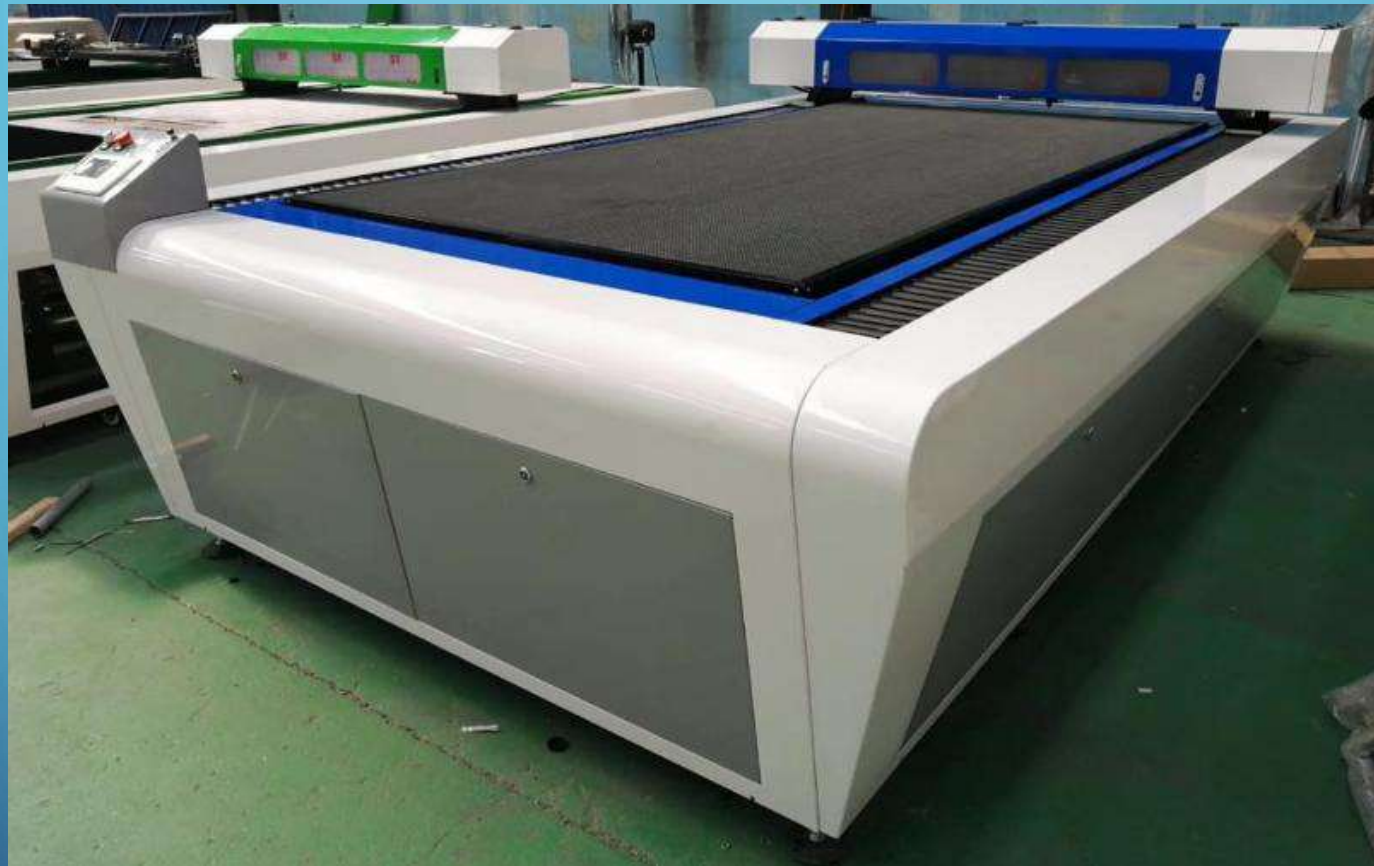
ATS 1390BH (Double Head)

Technical Specifications

- Working area : 1300mm x 900mm
- Ruida RDC 6445G with high Memory **Latest High Speed controller** with color Display & Software
- Double head Shift controlled manually from Motion controller stepper motor feature is provided.
- 100W sealed glass laser tube- 2 pcs
- Laser power supply 100W with thermostat-2 pcs
- US lenses & Silver **Metal Mirror**
- Water cooling system with **latest Technology**
- High Speed Stepper Motor lead shine
- DSP offline control with USB Interface
- **High speed Synchronization Linear Transmission Mechanism**
- Dual option Knife & Honey Comb
- **CW 5200: Industrial chiller with refrigeration system & high capacity DC water pump-1pc**
(Specially designed for Double Head)
- **Special SS Profile used for X & Y Motion**
- Engraving speed 0-1200mm/sec
- Cutting speed 0-600mm/sec

Accessories: Blower & Compressor

ATS 1325A Laser cutting and engraving machine (Large format)



ATS 1325A

Technical Specifications

- Working area : 1300mm x 2500mm
- Ruida RD 644G controller with colour Display and software
- 150w CO2 sealed glass laser tube
- Laser power supply 150w with thermostate
- Imported lenses & mirror
- Water cooling system
- Stepper Motor lead shine
- DSP offline control with USB Interface
- HIWIN square linear with Belt Transmission
- S&A CW 5200: Industrial chiller with refrigeration system
- Engraving speed 0-75000mm/min
- Cutting speed 0-40000mm/min
- **High speed mechanism.**
 - **Accessories:** Blower & Compressor

ATS 1610 DH (Double Head Co2 Laser Machine)



ATS 1610 DH (Double Head Laser)

Technical Specifications

- Working area : 1600mmx1000mm
- Ruida RD 644 5G controller with color Display and software
- **120W CO2 sealed glass laser tube(2 PC)**
- **Dual option Knife & Honey Comb**
- Laser power supply 130W (2 PC)
- Imported lenses & mirror
- Red Pointer
- Water cooling system
- Stepper Motor lead shine
- **Roller Guide Linear Transmission Mechanism**
- DSP offline control with USB Interface
- Square Rail Transmission
- CW 5200: Industrial chiller with refrigeration system
- Engraving speed 0-1000mm/sec
- Cutting speed 0-500mm/sec

Accessories: Blower & Compressor

1390 DH (Double head)



1390 DH (Double head)

Technical Specifications

- Working area : 1300mmx900mm
- Ruida RD 6442 controller with color Display and software
- *Ceremic 100W CO2 sealed glass laser tube(2 PC)*
- *Cutting knife*
- Laser power supply 100W (2 PC)
- Imported lenses & mirror
- Red Pointer
- Water cooling system for source
- Stepper Motor lead shine
- **Roller Guide Linear Transmission Mechanism**
- DSP offline control with USB Interface
- Square Rail Transmission
- CW 5200: Industrial chiller with refrigeration system
- Engraving speed 0-1000mm/sec
- Cutting speed 0-500mm/sec

Accessories: Blower & Compressor

1810 DR (Double Axis, double Head)



ATS 1810 DR (Double Axis, Double Head)

Technical Specifications

- Working area : 1800mm x 1000mm
- Ruida RDV 6445G with high Memory **Latest High Speed controller** with double axis control & vision Software
- Double head Shift controlled manually.
- 130W sealed glass laser tube- 2 pcs
- Laser power supply 130W with thermostat-2 pcs
- US lenses & Silver Metal Mirror
- **Heavy duty Motor** controlled for fabric roll
- **Huge vision camera** for referencing print and cut
- Water cooling system with **latest Technology**
- High Speed Stepper Motor lead shine
- DSP offline control with USB Interface
- Double X axis bar for individual design cutting
- **High speed Synchronization Linear Transmission Mechanism**
- Dual option Knife & Honey Comb
- **CW 5200: Industrial chiller with refrigeration system & high capacity DC water pump-1pc (Specially designed for Double Head)**
- **Special SS Profile used for X & Y Motion**
- Engraving speed 0-1200mm/sec
- Cutting speed 0-600mm/sec

Accessories: Blower & Compressor



Co2 Laser Marking Machine

Models

Model no	Size	Specialty	Application
ATS 2020 - 30 Watt	8"x8"	On the fly Marking and Engraving	Non-metal
ATS 4040 - 50 Watt	16"x16"	On the fly Marking and Engraving	Non-metal
ATS 5050 - 50 Watt	20"x20"	On the fly Marking and Engraving	Non-metal
ATS 6060 - 120 Watt	24"x24"	On the fly Marking and Engraving	Non-metal

ATS 2020/ATS 4040/ATS 5050/ ATS 6060 -CO2 LASER MARKING MACHINE DYNAMIC LARGE AREA LD-LA-80/100/120/150



Applicable Materials

Leather, Cloth, Craft products, Wood, Acrylic, Bamboo, Paper, Plastic, Wood Box, Wine Box, Packing Box, Chessboard, Blanket, Concrete etc.

ATS 2020/ATS 4040/ATS 5050/ ATS 6060 -CO2 LASER MARKING MACHINE
DYNAMIC LARGE AREA LD-LA-80/100/120/150



ATS 2020/ATS 4040/ATS 5050/ ATS 6060 -CO2 LASER MARKING MACHINE DYNAMIC LARGE AREA LD-LA-80/100/120/150

Features

1. ATS CO2 laser marking machines have a very good cost performance.
2. The glass tube laser, lifetime is up to 10,000 hours.
3. Integrated all-in design, fully enclosed and free maintenance optical system.
4. Photoelectric and mechanical parts are highly integrated. Working area is 300×300~600x600mm adjustable, 800x800mm can custom made if requested.
5. The linear marking speed is 0~400 meters/minute.
6. The circuit and parts are professionally designed and optimized, there is no electronic interference from high voltage laser to galvanometer scanner and marking card.

ATS 2020/ATS 4040/ATS 5050/ ATS 6060 -CO2 LASER MARKING MACHINE DYNAMIC LARGE AREA LD-LA-80/100/120/150

Configuration

Laser Source: CO2 Glass Tube-Reci W2,W4, W6 optional

Laser Power Supply: Jinan Zhenyu

Switching Power Supply: Shanghai Hengfu

Galvonometer Scanner: Custom Made High Speed Scanning System

Red Dot Positioning Laser: $\Phi 1\text{mm}$ Red dot laser- $\Phi 12 \times 36\text{mm}$

Marking Control System: Ezcad

Control Cabinet: Aluminum Alloy Lifting Table, Marble Table Top

Worktable: Lifting Worktable+Dual Airduct+Blade and Honeycomb Workbench

Computer: Industrial Computer

Water Cooler: S&A CW5200 Chiller

Exhaust Fan: Jiejin Industrial Fan 750W

ATS 2020/ATS 4040/ATS 5050/ ATS 6060 -CO2 LASER MARKING MACHINE DYNAMIC LARGE AREA LD-LA-80/100/120/150

Technical Parameters

Laser Power: 100W(W2), 120W(W4), 150W(W6)
Laser Wavelength: 10640nm
Laser Frequency: 3KHz~20KHz
Marking Area: 300x300mm~600x600mm; 800x800mm optional
Marking Depth: $\leq 2\text{mm}$
Minimum Line Width: 0.05mm
Repeatability accuracy: $\pm 0.05\text{mm}$
Marking Speed: 0~400m/minute
Input Power: 220VAC, 50/60HZ
Total Power: 2000W
Product Size and Weight: 900*1700*1400mm/220kg
Packing Size and Weight: 210*110*95cm/2.2CBM/320kg
Stuffing Quantity: 12 sets/20'FCL, 24 sets/40'HC

ATS 2020/ATS 4040/ATS 5050/ ATS 6060 -CO2 LASER MARKING MACHINE DYNAMIC LARGE AREA LD-LA-80/100/120/150

Product Details

Detail 01: Dynamic Galvanometer Scanner



ATS 2020/ATS 4040/ATS 5050/ ATS 6060 -CO2 LASER MARKING MACHINE DYNAMIC LARGE AREA LD-LA-80/100/120/150

Product Details

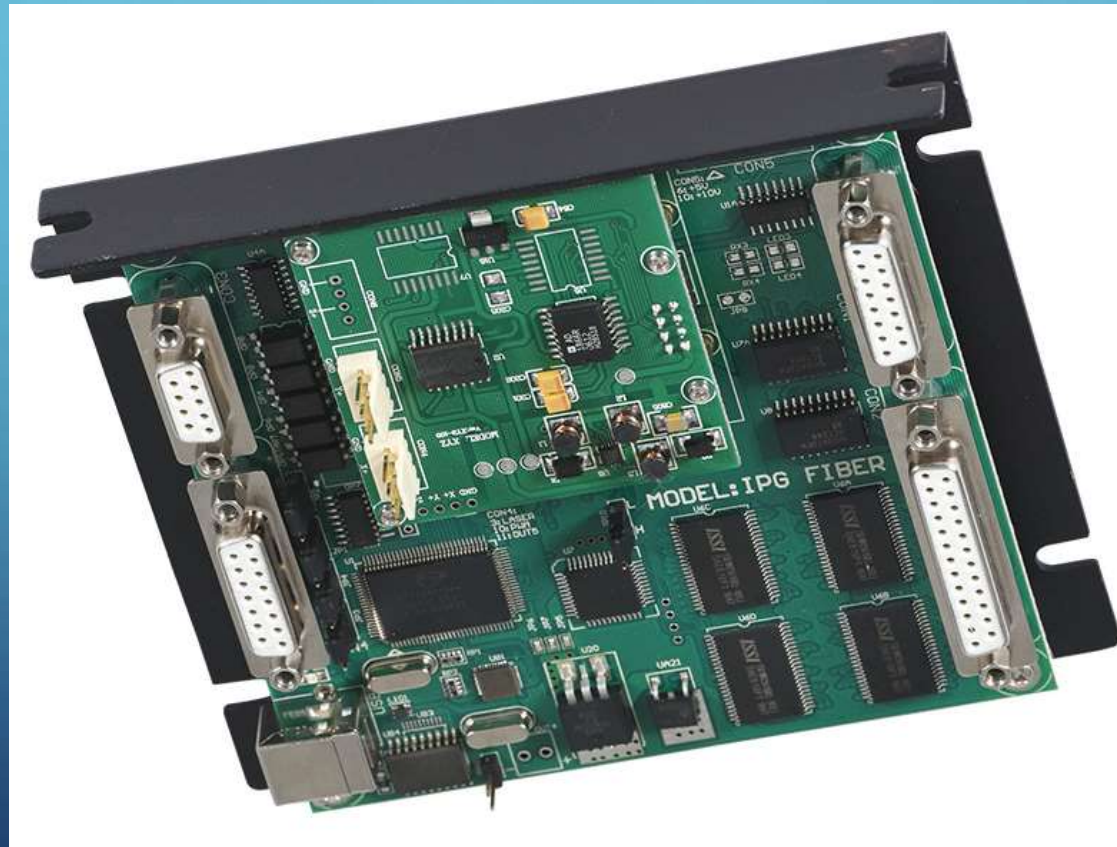
Detail 02: Windows Lens



ATS 2020/ATS 4040/ATS 5050/ ATS 6060 -CO2 LASER MARKING MACHINE DYNAMIC LARGE AREA LD-LA-80/100/120/150

Product Details

Detail 03: Marking Laser Motion controller card



ATS 2020/ATS 4040/ATS 5050/ ATS 6060 -CO2 LASER MARKING MACHINE DYNAMIC LARGE AREA LD-LA-80/100/120/150

Product Details

Detail 04: Reci Laser Tube



ATS 2020/ATS 4040/ATS 5050/ ATS 6060 -CO2 LASER MARKING MACHINE DYNAMIC LARGE AREA LD-LA-80/100/120/150

Product Details

Detail 05: Lifting Worktable+Dual Airduct+Blade and Honeycomb Workbench



ATS 2020/ATS 4040/ATS 5050/ ATS 6060 -CO2 LASER MARKING MACHINE DYNAMIC LARGE AREA LD-LA-80/100/120/150

Product Details

Detail 06: S&A Water Chiller



ATS 2020/ATS 4040/ATS 5050/ ATS 6060 -CO2 LASER MARKING MACHINE DYNAMIC LARGE AREA LD-LA-80/100/120/150

Product Details

Detail 07: Control Cabinet



CNC Routers

Model no	Size	Specialty	Application
ATS 1060 2.2kw (Tslot)	2'x3'	Die & Wooden Boxes	Metal & Non-metal
ATS 1313 3.2kw (Tslot PVC)	4'x4'	2d and 3d routing machine	Metal & Non-metal
ATS C1 1325 3.7kw/4.5kw/5.5kw (PVC Tslot Bed) - (8'x4')	8'x4'	2d and 3d routing machine	Metal & Non-metal
ATS 1325 C1 4.5kw / 5.5kw(Vacuum Bed) - (8'x4')	8'x4'	2d and 3d routing machine	Metal & Non-metal
ATS 1325 A1 4.5kw / 5.5kw (Tslot Bed)	8'x4'	2d and 3d routing machine	Metal & Non-metal
ATS M2 1325 5.5kw (Tslot PVC, Vacuum Bed)	8'x4'	2d and 3d routing machine	Metal & Non-metal
ATS M2S 1325 6.0kw (Vacuum bed)	8'x4'	2d and 3d routing machine (High Precision 3D)	Metal & Non-metal
ATS M2SW 1325 5.5kw (Water Bed)	8'x4'	2d and 3d routing machine (Preferred for Stone)	Metal & Non-metal
ATS M 1325 5.5kw (Water Bed)	8'x4'	For stone 2D and 3D and carving	Metal & Non-metal
ATS 1637 5.5kw (Water Bed, Vacuum Bed & Tslot PVC)	12'x5'	2d and 3d routing machine (preferred for large Format)	Metal & Non-metal
ATS M5S 1325 5.5kw (ATC ROUTER)	8'x4'	2d and 3d routing machine (High Precision 3D)	Metal & Non-metal
ATS M7 1325 5.5kw (CCD and Oscillating Knife)	8'x4'	2d and 3d routing machine (Preferred for PRINT AND CUT)	Metal & Non-metal
ATS M9 2513 5.5kw (Table Movement WITH ATC)	8'x4'	2d and 3d routing machine (Preferred for Stone)	Metal & Non-metal

ATS 1060 2.2kw (Tslot)



ATS 1060 2.2kw (Tslot)

Technical Specification

- Working Area : 1000 x 600mm
- **Heavy Frame**
- Lead Shine Stepper and Motor
- **450B with Lead Shine Stepper Drive 860**
- Best Brand Invertor Drive
- High Precise T-slot worktable
- **2.2 KW Water Cooled**
- 20mm Square rail for X Y Z axis
- PVC Bed
- Oil Tank Pumping System for Lubrication
- TBI Ball Screw Transmission for Y & Z axis
- Height of Z axis 150 mm.
- Gear rack for X Y Axis
- **Tools box with Sample Tools and Clamps**
- **NC studio online system**

ATS 1313 3.2kw (PVC TSLOT BED)

2d and 3d routing machine



ATS 1313 3.2kw (PVC TSLOT BED)

Technical Specifications

- Working Area : 1300 x 1300mm
- **Heavy Frame**
- Lead Shine Stepper and Motor
- **450B with Lead Shine Stepper Drive 860**
- Best Brand Invertor Drive
- High Precise T-slot worktable
- **3.2 KW Water Cooled**
- 20mm Square rail for X Y Z axis
- PVC Bed
- Oil Tank Pumping System for Lubrication
- TBI Ball Screw Transmission for Z axis
- Height of Z axis 200 mm.
- Gear rack for X Y Axis
- **Tools box with Sample Tools and Clamps**
- **NC studio online system**

ATS C1 1325 3.7kw/4.5kw/5.5kw (PVC TSLOT BED) - (8'x4')

2d and 3d routing machine



ATS 1325 C1 4.5kw / 5.5kw(VACUUM BED) - (8'x4')

2d and 3d routing machine



ATS 1325 4.5kw (PVC TSLOT BED) - (8'x4')

Technical Specifications

X,Y, Z Working Area	1300x2500mm
X,Y,Z Traveling Positioning Accuracy	±0.05mm
X,Y,Z <u>Repositioning</u> Accuracy	±0.05mm
Max.Traveling Speed	30000mm/min
Max. Working Speed	20000mm/min
Spindle Power	3.5KW
Drive&Motor	Stepper
Working Voltage	220V
Operating System	NC Studio

1. Application :working on Woodworking & Advertising industry.
2. HIWIN Rail from Taiwan & Ball screw for Z axis
3. Aluminum T-slot working table (option : Vacuum Working table)
4. Nc studio or Missile Control System , easy to control .
5. Stepper motor (option : Servo motor)

ATS 1325 4.5kw (PVC TSLOT BED) - (8'x4')

Samples



ATS A1 1325 5.5kw (PVC TSLOT BED) - (8'x4')

2d and 3d routing machine



ATS A1 1325 5.5kw (PVC TSLOT BED) - (8'x4')

2d and 3d routing machine



ATS A1 1325 5.5kw (PVC TSLOT BED) - (8'x4')

Technical Specifications

X,Y, Z Working Area	1300x2500mm
X,Y,Z Traveling Positioning Accuracy	±0.05mm
X,Y,Z <u>Repositioning</u> Accuracy	±0.05mm
Max.Traveling Speed	30000mm/min
Max. Working Speed	20000mm/min
Spindle Power	3.5KW
Drive&Motor	Stepper
Working Voltage	AC380V
Operating System	NC Studio / DSP A11

Features

- 1.The advertising wood cnc router machine is one of the most popular product of woodworking CNC machine.
- 2.Structure: thick square tube welded bed, the overall aging treatment, strict control of bed deformation rate.
- 3.Transmission: Y-axis helical rack, fast speed.
- 4.Drive system: Leader shine stepper driver with high-speed stepper motor, it is good for engraving and cutting MDF, wood, acrylic and other furniture and advertising material.

ATS A1 1325 5.5kw (PVC TSLOT BED) - (8'x4')

Samples



ATS M2 1325 6.0kw (Vaccum bed) - (8'x4')

2d and 3d routing machine (High Precision 3D)



M2 model machine is a standard industrial CNC Machine . The high precision molded bed and machined parts , the three-axis servo motor , combined with high-precision rack and reducer , can be used for high-intensity processing in various industries , and can also be used for mini-word processing in sign making . M2 is designed with a manual tool change and is a cost effective machine .

ATS M2 1325 6.0kw (Vaccum bed) - (8'x4')

Technical Specifications

Working Area : 1300 x 2500mm x 200mm
Heavy Frame
RONGHUA 6KW Water cooled spindle
FULING 7.5KW INVERTER
Taiwan TWIN25 Square Rail
German HEROIN Gear Rack
NC STUDIO WEIHONG CONTROLLER SYSTEM.
LEADSHINE Easy Servo With Motor
Leadshine Easy Servo Driver.
Vacuum BED WITH HEAVY FABRICATION.
High Power 7.5kw air ring vacuum pump
X,Y,Z travelling position $\pm 0.02\text{mm}$
X,Y,Z Repositioning Accuracy $\pm 0.02\text{mm}$
Tools box with Sample Tools and Clamps.
Max travelling speed 50000mm/min
Max Working Speed 20000mm/min
Working voltage AC380 V
Water Motor for Spindle Circulation.
WATER MOTOR FOR WATER SPRAY ON TOOL.
TOOL BOX.

ATS M2 1325 6.0kw (Vaccum bed) - (8'x4')

Technical Specifications



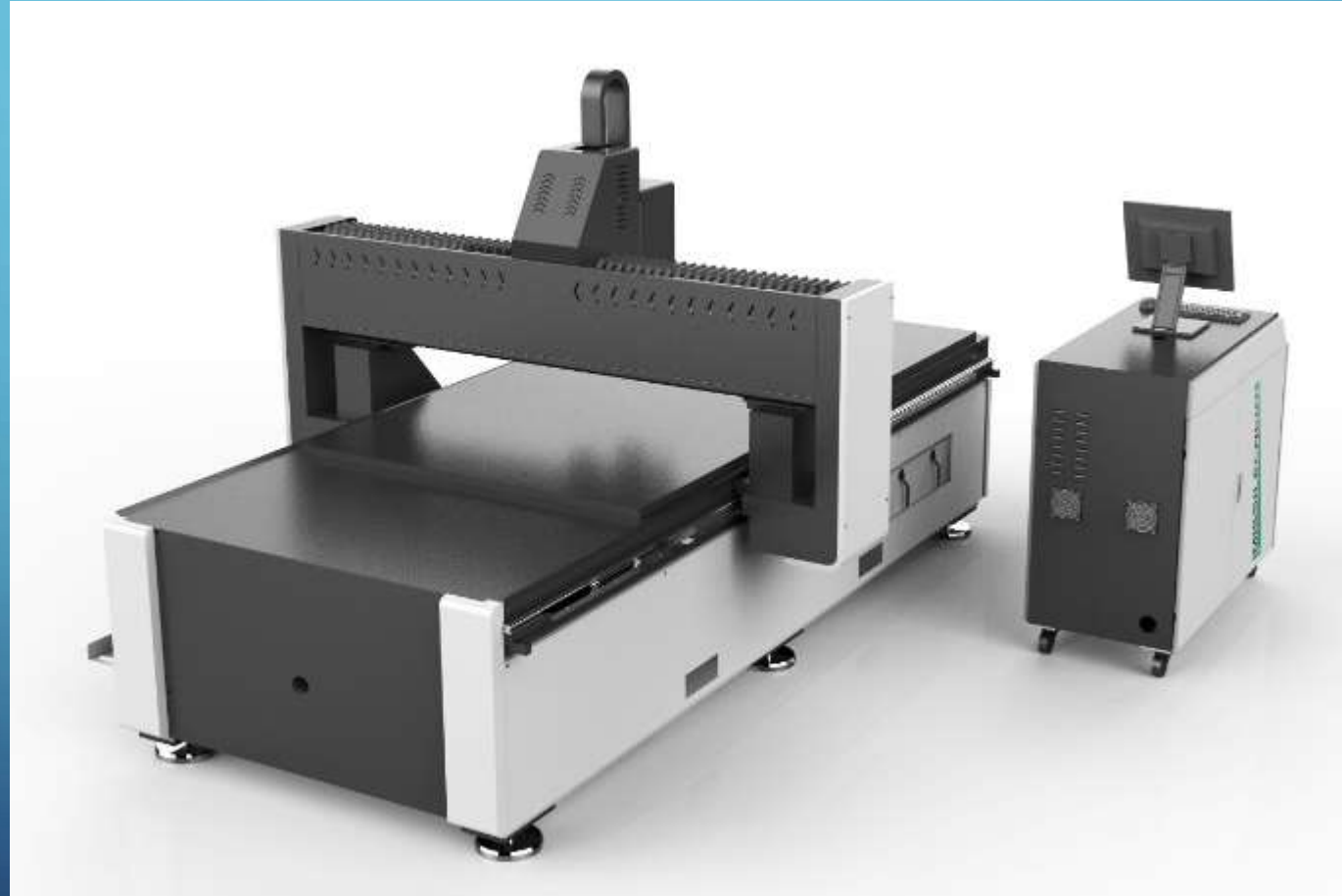
1.This machine is our 2019 new high quality 3d carving sign making acrylic cutting cnc router with Servo system we equipped our machine with the Famous brand Leadshine servo with France MOTO Reducer,and 5.5kw watercooling Ronghua spindle,can achieve deep carving work with high precision stably and smoothly.

2.It is mainly used for acrylic, mdf ,pvc board processing, wave board production,various types of artificial board shaped cutting, neon channel literally cutting light box molding, aluminum acrylic cutting.

Perfect for sign making, such as channel letters carving.

ATS M2S 1325 6.0kw (Vaccum bed) - (8'x4')

2d and 3d routing machine (High Precision 3D)



ATS M2S 1325 6.0kw (Vaccum bed) - (8'x4')

Technical Specifications

Working Area : 1300 x 2500mm x 200mm
Heavy Frame
RONGHUA 6KW Water cooled spindle
FULING 7.5KW INVERTER
Taiwan TWIN25 Square Rail
German HEROIN Gear Rack
NC STUDIO WEIHONG CONTROLLER SYSTEM.
LEADSHINE 850W Servo With Motor
Leadshine Servo Driver with imported French moto reducer
Vacuum BED WITH HEAVY FABRICATION.
High Power 7.5kw air ring vacuum pump
X,Y,Z travelling position $\pm 0.02\text{mm}$
X,Y,Z Repositioning Accuracy $\pm 0.02\text{mm}$
Auto Tool Calibration System
Auto Electronic Oil Spraying System
Tools box with Sample Tools and Clamps.
Max travelling speed 50000mm/min
Max Working Speed 20000mm/min
Working voltage AC380 V
CW 3000 CHILLER FOR SPINDLE WATER COOLING
WATER MOTOR FOR WATER SPRAY ON TOOL.
TOOL BOX.

ATS M2SW 1325 5.5kw (Water bed) - (8'x4')

2d and 3d routing machine (Best for Stone)



ATS M2SW 1325 5.5kw (Water bed) - (8'x4')

Technical Specifications

Working Area : 1300 x 2500mm x 200mm

Heavy Frame

RONGHUA 6KW Water cooled spindle

FULING 7.5KW INVERTER

Taiwan TWIN25 Square Rail

German HEROIN Gear Rack

NC STUDIO WEIHONG CONTROLLER SYSTEM.

LEADSHINE 850W Servo With Motor

STAINLESS STEEL WATER BED WITH HEAVY FABRICATION.

X,Y,Z travelling position $\pm 0.02\text{mm}$

X,Y,Z Repositioning Accuracy $\pm 0.02\text{mm}$

Auto Tool Calibration System

Auto Electronic Oil Spraying System

Tools box with Sample Tools and Clamps.

Max travelling speed 50000mm/min

Max Working Speed 20000mm/min

Working voltage AC380 V

CW 3000 CHILLER FOR SPINDLE WATER COOLING

WATER MOTOR FOR WATER SPRAY ON TOOL.

TOOL BOX.

ATS M 1325 5.5kw (Water Bed)



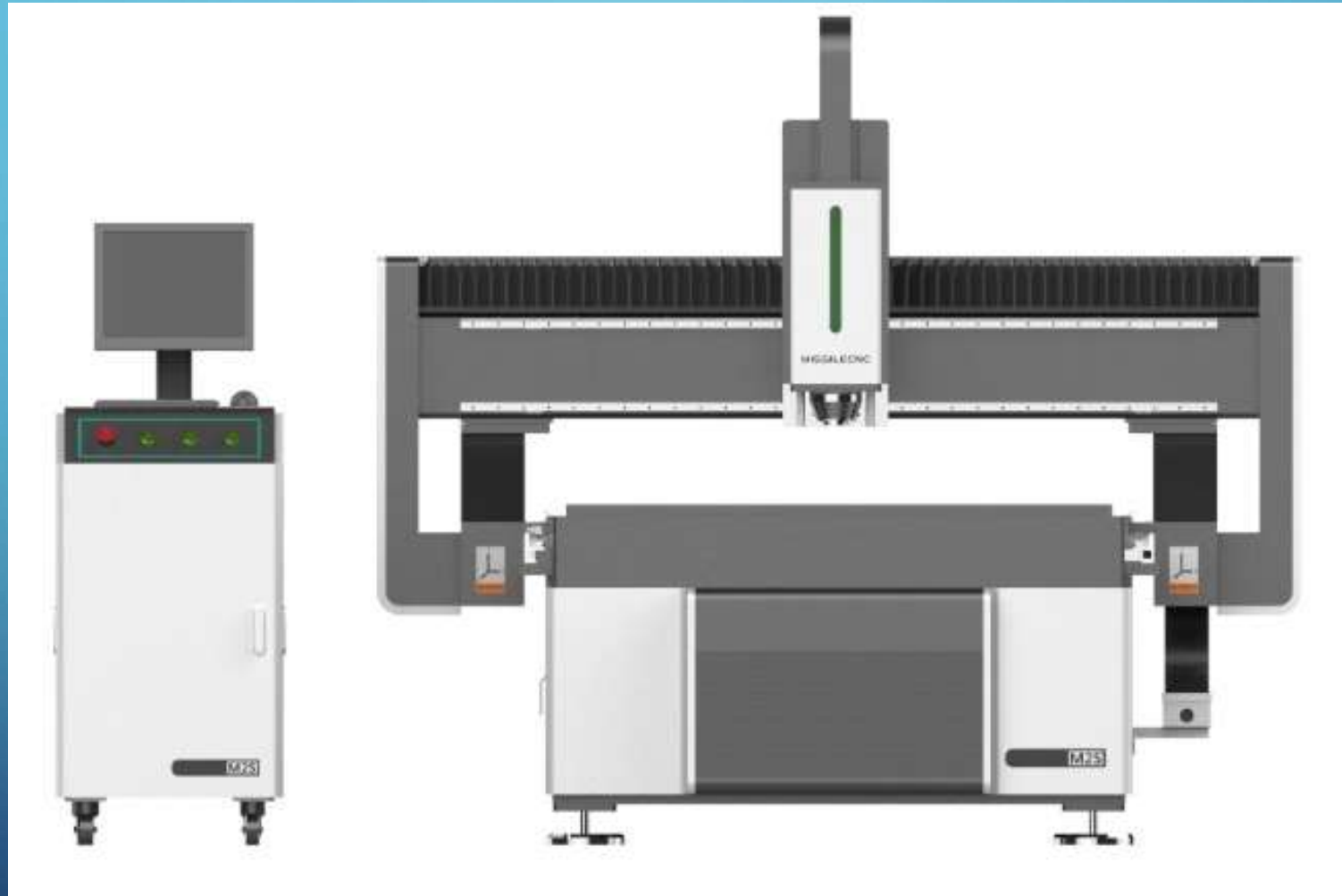
ATS M 1325 5.5kw (Water Bed)

Technical Specifications

- Working Area : 1300 x 2500mm
- Motor- Lead Shine Stepper
- Lead Shine Driver
- Delta Inverter Drive
- T-slot worktable with Water Bed
- **5.5 KW Heavy water cooling spindle_(2pc)**
- Spindle RPM 24000
- Square rail Hiwin 25mm for XYZ axis
- **Ball Screw and Hiwin Square Rail**
- **Transmission for Z axis**
- Z axis working size : 300mm
- Feeding material Height: 350mm
- Tools box
- Offline working system.
- Machine weight: 2500kg
- **Transmission Gantry Moving**
- Processing Speed: 0-20000 mm/min
- **DSP Weihong NK105-G2 Advance control system**
- **Water Spray system for Metal & Marble.**
- **Water Motor for Spindle Circulation.**

ATS 1637 5.5kw, Vacuum, Water bed & TSlot - (12'x5')

2d and 3d routing machine (preferred for large Format)



ATS 1637 5.5kw, Vacuum, Water bed & TSlot - (12'x5')

Working Area : 1600 x 3700mm x 200mm

Heavy Frame

RONGHUA 6KW Water cooled spindle

FULING 7.5KW INVERTER

Taiwan TWIN25 Square Rail

German HEROIN Gear Rack

NC STUDIO WEIHONG CONTROLLER SYSTEM.

LEADSHINE 850W Servo With Motor

Vacuum Bed with HEAVY FABRICATION.

X,Y,Z travelling position $\pm 0.02\text{mm}$

X,Y,Z Repositioning Accuracy $\pm 0.02\text{mm}$

Auto Tool Calibration System

Auto Electronic Oil Spraying System

Tools box with Sample Tools and Clamps.

Max travelling speed 50000mm/min

Max Working Speed 20000mm/min

Working voltage AC380 V

CW 3000 CHILLER FOR SPINDLE WATER COOLING

WATER MOTOR FOR WATER SPRAY ON TOOL.

TOOL BOX.

ATS 1637 5.5kw - (12'x5')

Applications of High Quality M2S Wood CNC Router Machine:



1. Furniture industry: wooden doors, cabinet doors, board, office, solid wood furniture

2. Other wood products industry: speakers, game consoles cabinets, computer tables, sewing machine table, musical instruments, etc.

3. Board processing industry: insulation piece, plastic chemical products; PCB; fast train inside body, bowling tracks, stairs; compact grade laminate, epoxy resin, ABS, PP, PE and other cementitious mixtures's milling process

4. Decoration industry: folding screen, wave plates, large wall, advertising boards, signs and logo's processing.

ATS M5S 1325 5.5kw (ATC ROUTER)



M5S Mini Words CNC Router is one of the “flagship” model in our company. Adopted with gantry moving designs, with high precision German HERION gear rack; high precision processed machine frame machined parts. That makes the machine working effects stand out in the industries by advanced and precise assembly process. Linear type four tools changing, it is not only applies to the advertising industry, also widely used for high precision woodworking industries or other industries.

ATS M5S 1325 5.5kw (ATC ROUTER)

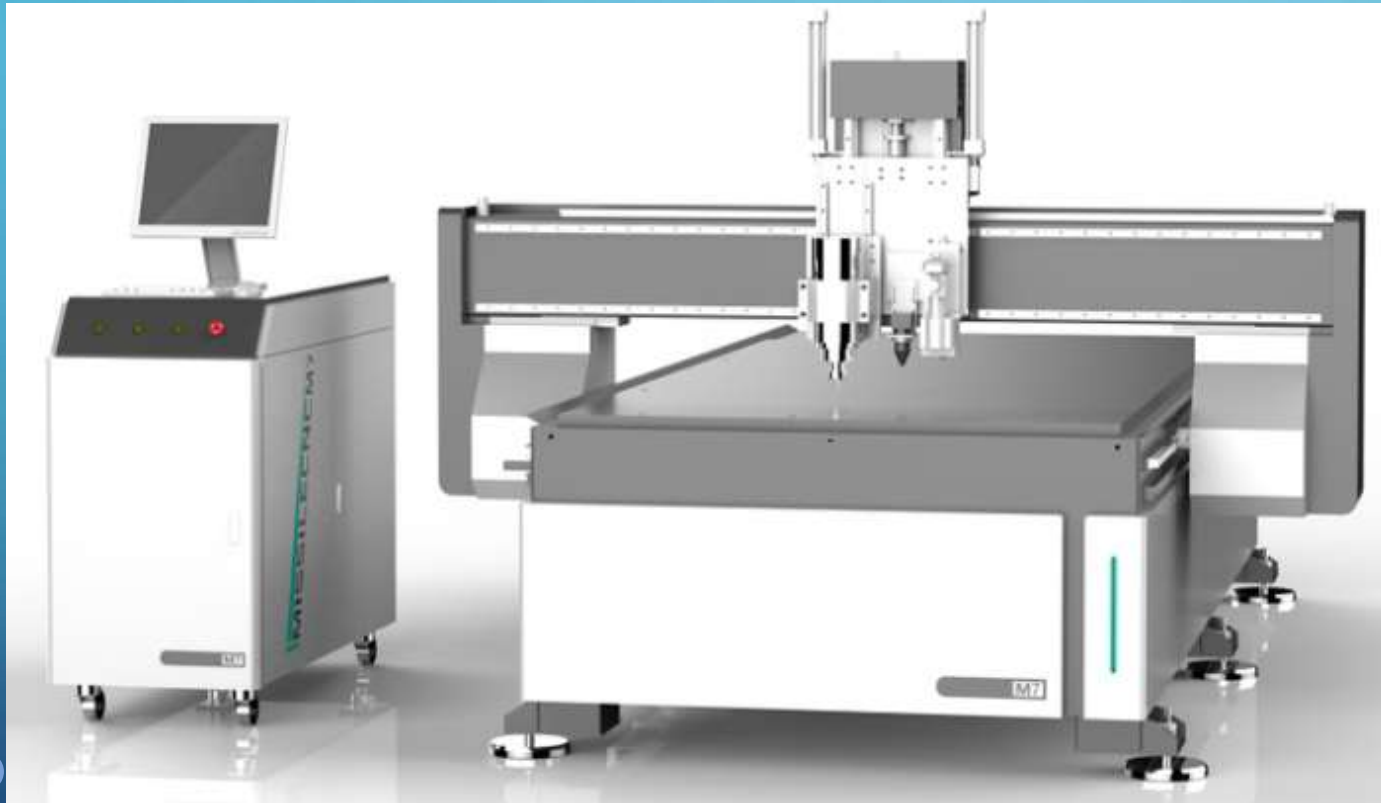


ATS M5S 1325 5.5kw (ATC ROUTER)

Technical Specifications

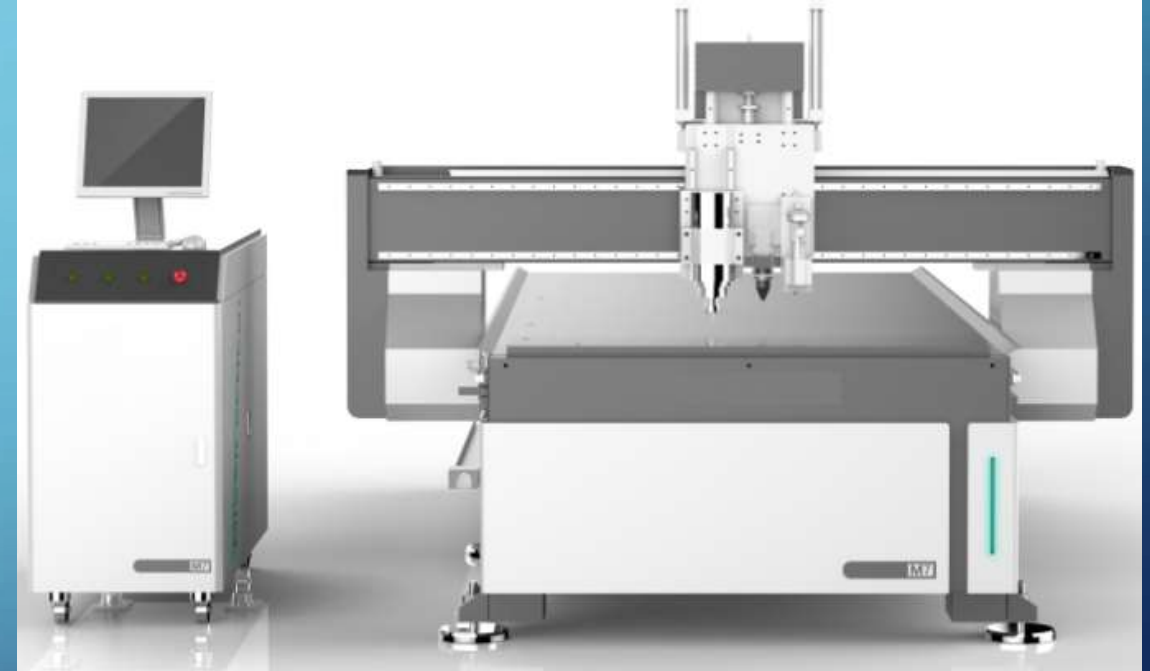
XYZ working area	1300*2500*200mm
XYZ Traveling Positioning Accuracy	±0.02mm
XYZ Repositioning Accuracy	±0.02mm
Max. Traveling Speed	50000mm/min
Max. Working Speed	20000mm/min
Spindle Power	7.5KW
Drive & Motor	Servo
Tool Storage Capacity	4
Working Voltage	AC380V
Operating System	NC Studio For ATC

ATS M7 1325 5.5kw (CCD and Oscillating Knife)



M7 CNC router machine with CCD and Oscillating knife, with a camera and oscillating knife. It is good for soft advertising material. like stickers, PVC and so on, it even can work wood MDF acrylic and aluminum. Machine Adopts with 5.5kw Ronghua water cooling spindle, and servo motor driver, mark cut control system. It also can meet various of material cutting drilling, routing and so on.

ATS M7 1325 5.5kw (CCD and Oscillating Knife)



ATS M7 1325 5.5kw (CCD and Oscillating Knife)

X,Y,Z Working Area	1300x2500mm
X,Y,Z Traveling Positioning Accuracy	±0.02mm
X,Y,Z <u>Repositioning Accuracy</u>	±0.02mm
Max.Traveling Speed	50000mm/min
Max. Working Speed	20000mm/min
Spindle Power	5.5KW
Drive&Motor	Servo
Working Voltage	AC380V
Operating System	<u>Markcut</u>

Machine Features

- 1.Ronghua 5.5KW water cooling spindle , ensure the acrylic cutting speed and precision, equipped with Leadshine servo and the France MOTO Reducer, make the machine work more stable and get higher configuration.
 - 2.Besides, the bed has been via tempering aging treatment, maximum release the deformation, ensure the machine working precision after long using.
 - 3.Equipped with Oscillating knife and CCD system, guarantee the working precision on painted pvc
- All these just for Taking you the high speed and high precision acrylic wood aluminum carving effect!!!

ATS M7 1325 5.5kw (CCd and Oscillating Knife)

Samples



Application

Advertising: Advertising sign, logo making, mini letter cutting, acrylic cutting, plastic molding, engraving on a variety of advertising decorative products materials

Aluminum industry: Cutting aluminum, aluminum composite panel, aluminum profile, the thickness of aluminum is less than 8mm. 3D ornamental engraving process, wave board production, LED, neon trough literal cutting, plastic mold making light box . Acrylic, copper, PVC board, artificial stone, MDF board and other types of sheet processing

Various Wooden products: like Solid Wood Furniture, Solid Wood Door, Decorative Panel, sofa head, bed head, table legs, Computer Desk, Office Furniture, kitchen cabinets, wardrobe cabinets.

ATS M9 2513 5.5kw (Table Movement WITH ATC)



M9 is one of the “flagship” model of 3D letters CNC Router in our company. Adopted with table moving designs; three-axis with Taiwan grinding level, high-speed, voice-less ball screw transmission; Taiwan grinding level square rail; imported servo motor and reducer from Japan; linear type 4 tools changing. It is one high precision machine. M9 is specifically designed for mini words making.

ATS 1637 5 ATS M9 2513 5.5kw (Table Movement WITH ATC).5kw - (12'x5')



ATS 1637 5 ATS M9 2513 5.5kw (Table Movement WITH ATC).5kw - (12'x5')

Technical Specifications

XYZ working area	2500*1300*200mm
XYZ Traveing Positioning Accuracy	±0.02mm
XYZ Repositioning Accuracy	±0.02mm
Max.Traveling Speed	50000mm/min
Max.Working Speed	20000mm/min
Spindle Power	7.5KW
Drive&Motor	YASKAWA servo
Tool Storage Capacity	4
Working Voltage	AC380V
Operating System	Weihong for ATC

ATS 1637 5 ATS M9 2513 5.5kw (Table Movement WITH ATC).5kw - (12'x5')

Technical Specifications

1

Ronghua 7.5KW water cooling
spindle with long using life



Taiwan TBI ball screw without noise

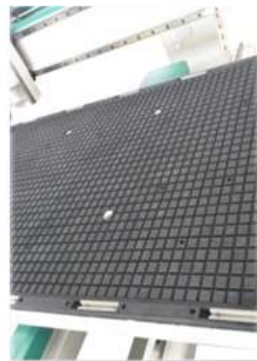
2

ATS 1637 5 ATS M9 2513 5.5kw (Table Movement WITH ATC).5kw - (12'x5')

Technical Specifications

3

Lapping 30 square rail with good quality



Vacuum table with 7.5KW air pump and automatic tools change with 4 tools

4

ATS 1637 5 ATS M9 2513 5.5kw (Table Movement WITH ATC).5kw - (12'x5')

Technical Specifications

5

Yaskawa 850W servo motors with famous reputation



Fulling inventer keep good working effect

6

ATS 1637 5 ATS M9 2513 5.5kw (Table Movement WITH ATC).5kw - (12'x5')

Samples



Machine Features:

- 1.Changsheng watercooling 7.5kw spindle, ensure the cutting speed and precision, ATC system,4 tools for choice, meeting many kinds of engraving and cutting needs.
 - 2.Most stable bed structure with Yaskawa servo motors to make sure working speed and stability
 - 3.Table moving with X, Y, Z axis Taiwan Grinding TBI ball screw make the machine work with low noise and high precision.
 - 4.NK-260 control system, can meet the linear automatic tool changes. Also with the DSP, make it is easy to operate.
 - 5.Many kinds of software (Ucancam, TYPE3, ARTCAT...)for choice, meet you many kinds of need.
- You can also tell us your details need of the machine, we can also design the machine to meet your needs.

Table Moving CNC Router For Acrylic 3D Letters M9 Main Application:

Acrylic, PVC board, MDF board and other boards processing, wave board production, various types of artificial board shaped cutting, LED, neon channel literally cutting, light box molding.

Fiber Laser Metal Marking Machine

Models

Model no	Size	Specialty	Application
ATS 2020 - 20 Watt/30 Watt/50 Watt/100 Watt	8"x8"	On the fly Marking and Engraving	Metal and Opaque objects
ATS 4040 - 20 Watt/30 Watt/50 Watt/100 Watt	16"x16"	On the fly Marking and Engraving	Metal and Opaque objects

Model no	Size	Specialty	Application
FIBER LASER MARKING MACHINE FULLY ENCLOSED ATS 20Q/ ATS 30Q/ ATS 50Q/ ATS 100Q	4.5"x4.5"	Gold and Silver Marking	Metal and Opaque objects

ATS 2020 / ATS 4040- 20 Watt / 30 Watt / 50 Watt / 100 Watt



Applicable Materials

All metals, alloy, oxide, electroplate, metal coating film, ABS, Epoxy, printing ink and engineering plastic, etc.

ATS 2020 / ATS 4040- 20 Watt / 30 Watt / 50 Watt / 100 Watt



ATS 2020 / ATS 4040- 20 Watt / 30 Watt / 50 Watt / 100 Watt

Features

1. Our fiber marking machine is the most advanced third generation of laser marking system.
2. Use the best fiber laser in the industry, lifetime is up to 100,000 hours.
3. Innovative integrated all-in design fully enclosed maintenance free optical system
4. Photo electronic and mechanical components are highly integrated, portable machine only weight 18kg
5. Air cooling no consumables low running cost save electricity and energy. 6. MOPA machine available, can mark colorful pictures on stainless steel.
6. 3D Dynamic machine, can mark on curved materials with auto-focusing system.

Auto Focusing: Optional

ATS 2020 / ATS 4040- 20 Watt / 30 Watt / 50 Watt / 100 Watt

Technical Specifications

Configuration

Laser Source: IPG/Raycus/Max/JPT Optional
Galvanometer Scanner: High Speed Digital Scanner
Switching Power Supply: Shanghai Hengfu
Red Light Pointer: Φ 1mm Red dot laser- Φ 12x36mm
Field Lens: Nanjing Wavelength
Marking Control System: JCZ Ezcad
Computer: Industrial Computer
Control Cabinet: Ledi Design or Public Design
Lifting Arm: 50cm Adjustable, 80cm Optional
Cooling System: Air Cooling
Rotator(optional): Three in One, Big and Small Available
Auto Focusing: Optional

ATS 2020 / ATS 4040- 20 Watt / 30 Watt / 50 Watt / 100 Watt

Technical Parameter

Laser Output Power: $\leq 20\text{W}$ (30W, 50W, 100W)

Laser Wavelength: 1064nm

Pulse Width: 20/30/50W: 100ns(90~110ns); 100W: 110ns(90~130ns)

Beam Quality: $M2=1.3$ (1.1~1.6)

Pulse Repeat Frequency: 20W: 30kHz~60kHz; 30W: 30kHz~60kHz; 50W: 50kHz~100kHz; 100W: 20kHz~200kHz.

Marking Area: 170mm×170mm(110×110, 140×140, 200×200, 240×240, 300×300mm optional)

Marking Depth: $\leq 2\text{mm}$

Power Consumption: $< 1000\text{W}$

Minimum Line Width: 0.01mm

Minimum Character Size: 0.05mm

Repeatability Accuracy: $\pm 0.01\text{mm}$

Working Power Supply: Upon Request

Marking Speed: 0~400meter/minute

Product Size and Weight: 800x700x1400mm, 80kgs

Packing Size and Weight: 900x720x1100mm, 150kgs

Fiber Laser Marking Machine Fully Enclosed ATS 20Q/ ATS 30Q/ ATS 50Q/ ATS 100Q



Applicable Materials

All metals, alloy, oxide, electroplate, metal coating film, ABS, Epoxy, printing ink and engineering plastic, etc.

Fiber Laser Marking Machine Fully Enclosed ATS 20Q/ ATS 30Q/ ATS 50Q/ ATS 100Q

Features

1. Our fiber marking machine is the most advanced third generation of laser marking system.
2. Use the best fiber laser in the industry, lifetime is up to 100,000 hours.
3. Innovative integrated all-in design, fully enclosed maintenance free optical system
4. Photo electronic and mechanical components are highly integrated, portable machine only weight 18kg
5. Air cooling no consumables low running cost save electricity and energy
6. MOPA machine available, can mark colorful pictures on stainless steel 3D Dynamic machine, can mark on curved materials with auto-focusing system.

Fiber Laser Marking Machine Fully Enclosed ATS 20Q/ ATS 30Q/ ATS 50Q/ ATS 100Q

Configuration

Laser Source: IPG/Raycus/Max/JPT Optional

Galvanometer Scanner: High Speed Digital Scanner

Switching Power Supply: Shanghai Hengfu

Red Light Pointer: $\Phi 1\text{mm}$ Red dot laser- $\Phi 12\text{x}36\text{mm}$

Field Lens: Nanjing Wavelength

Marking Control System: JCZ Ezcad

Computer: Optional

Cooling System: Air Cooling

Rotator(optional): Three in One, Big and Small Available

Fiber Laser Marking Machine Fully Enclosed ATS 20Q/ ATS 30Q/ ATS 50Q/ ATS 100Q

Technical Parameter

Laser Output Power: $\leq 20\text{W}$ (30W, 50W, 100W)

Laser Wavelength: 1064nm

Pulse Width: 20/30/50W: 100ns(90~110ns); 100W: 110ns(90~130ns)

Beam Quality: $M2=1.3$ (1.1~1.6)

Pulse Repeat Frequency: 20W: 30kHz~60kHz; 30W: 30kHz~60kHz; 50W: 50kHz~100kHz; 100W: 20kHz~200kHz.

Marking Area: 170mm \times 170mm(110 \times 110, 140 \times 140, 200 \times 200, 240 \times 240, 300 \times 300mm optional)

Marking Depth: $\leq 2\text{mm}$

Power Consumption: $< 1000\text{W}$

Minimum Line Width: 0.01mm

Minimum Character Size: 0.05mm

Repeatability Accuracy: $\pm 0.01\text{mm}$

Working Power Supply: Upon Request

Marking Speed: 0~400meter/minute

Product Size and Weight: 430x870x812mm, 60kgs

Packing Size and Weight: 550x1000x1000mm, 100kgs

Fiber Laser Marking Machine Fully Enclosed ATS 20Q/ ATS 30Q/ ATS 50Q/ ATS 100Q

Product Details

Detail 01: Fiber Laser Source



Fiber Laser Marking Machine Fully Enclosed ATS 20Q/ ATS 30Q/ ATS 50Q/ ATS 100Q

Product Details

Detail 02: Galvanometer Scanner



Fiber Laser Marking Machine Fully Enclosed ATS 20Q/ ATS 30Q/ ATS 50Q/ ATS 100Q

Product Details

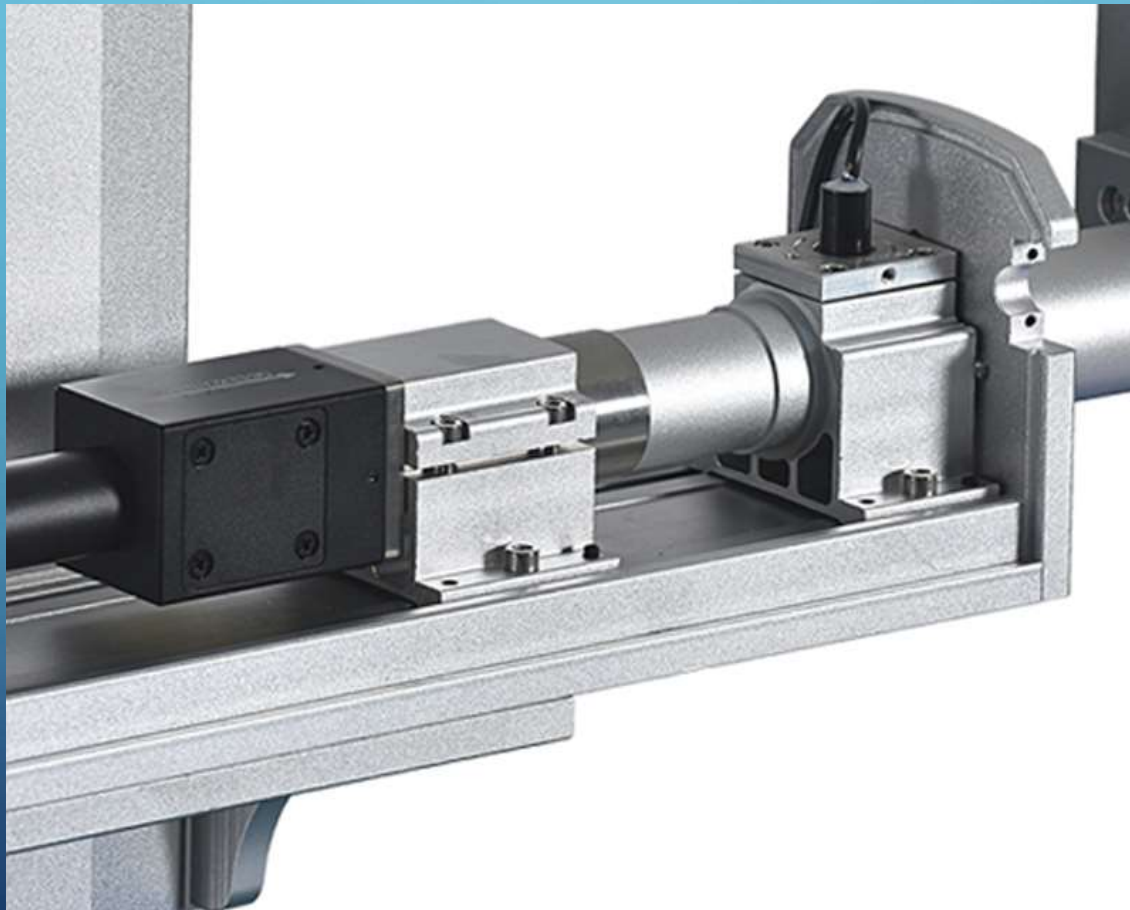
Detail 03: Field Lens



Fiber Laser Marking Machine Fully Enclosed ATS 20Q/ ATS 30Q/ ATS 50Q/ ATS 100Q

Product Details

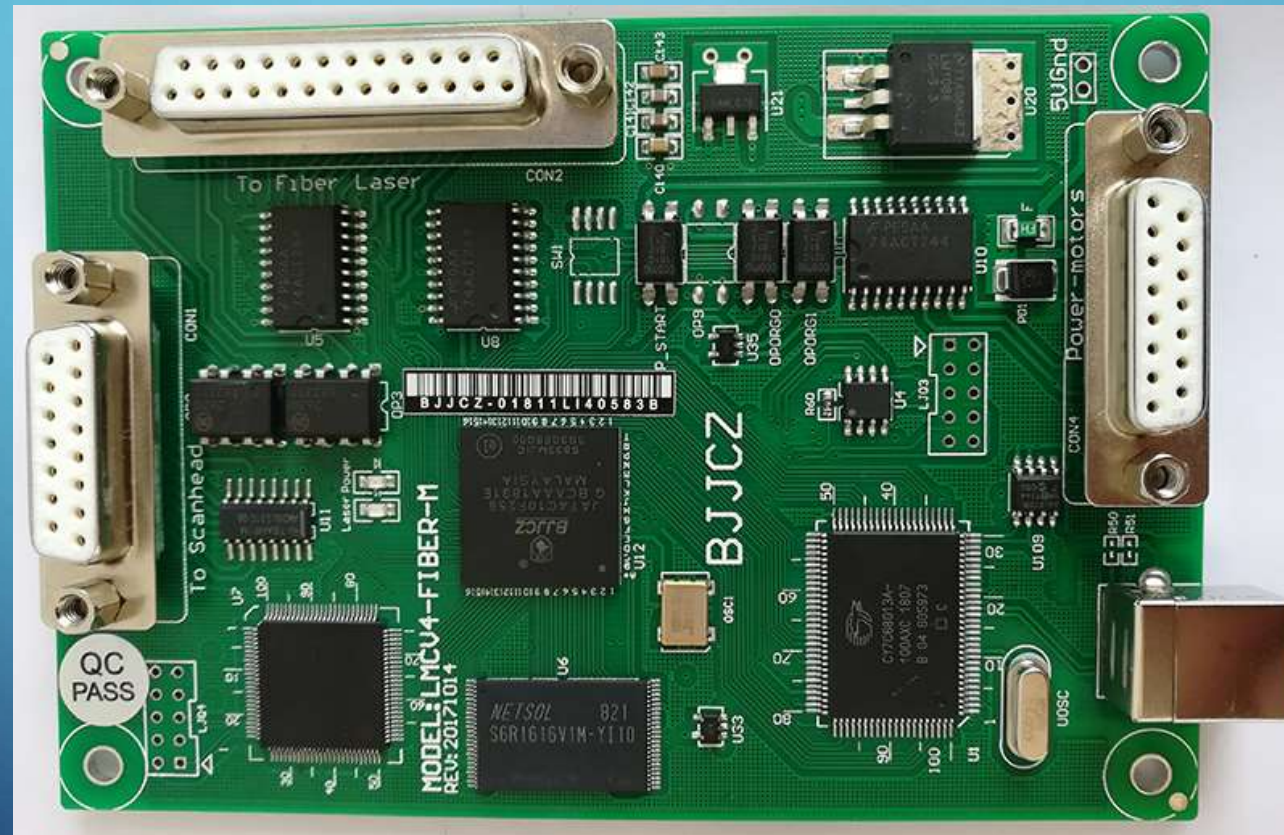
Detail 04: Light Path



Fiber Laser Marking Machine Fully Enclosed ATS 20Q/ ATS 30Q/ ATS 50Q/ ATS 100Q

Product Details

Detail 05: Marking Card



Fiber Laser Marking Machine Fully Enclosed ATS 20Q/ ATS ATS 30Q/ ATS 50Q/ ATS 100Q

Product Details

Detail 06: Control Cabinet



Fiber Laser Marking Machine Fully Enclosed ATS 20Q/ ATS 30Q/ ATS 50Q/ ATS 100Q

Product Details

Detail 07: Front and Back Side



Fiber Laser Marking Machine Fully Enclosed ATS 20Q/ ATS 30Q/ ATS 50Q/ ATS 100Q

Product Details

Detail 08: Rotator



Fiber Laser Metal Cutting Machine (Pipe cutting and Conveyor sheet)

Models

Model no	Size	Specialty (Can cut)	Application
ATS LF3015CN 1KW	5'x10'	10-12mm Sheet	Mild Steel
		5-6mm Sheet	Stainless Steel
		1mm	Brass
ATS LF3015CN 2KW	5'x10'	13-15.6mm Sheet	Mild Steel
		6.5-7.8mm Sheet	Stainless Steel
		1.3mm	Brass
ATS LF3015CN 3KW	5'x10'	16.9-20.28mm Sheet	Mild Steel
		8.45-10.14mm Sheet	Stainless Steel
		1.69mm	Brass
ATS LF3015CN 4KW	5'x10'	21.97-26.36mm Sheet	Mild Steel
		11-13.18mm Sheet	Stainless Steel
		2.20mm	Brass
ATS LF3015CN 5KW	5'x10'	28.56-34.27mm Sheet	Mild Steel
		14.28-17.13mm Sheet	Stainless Steel
		2.86mm	Brass
ATS LF3015CN 6KW	5'x10'	37.13-44.56mm Sheet	Mild Steel
		18.56-22.28mm Sheet	Stainless Steel
		3.71mm	Brass

ATS LF3015CN 1Kw/2Kw/3Kw/4Kw/5Kw/6Kw



ATS LF3015CN 1Kw/2Kw/3Kw/4Kw/5Kw/6Kw



ATS LF3015CN 1Kw/2Kw/3Kw/4Kw/5Kw/6Kw



LF3015CN fiber laser cutting machine as one classic model, widely used in many common areas of our life, such as processing of stainless steel kitchenware, storage cabinet and other cabinets, is closely related to people's daily life. Used for cutting a variety of metal plates, mainly used in stainless steel, carbon steel, galvanized sheet, electrolytic plate, brass, aluminum, various alloy plate, rare metal and other metal materials.

ATS LF3015CN 1Kw/2Kw/3Kw/4Kw/5Kw/6Kw

Technical Specifications

Machine Model	LF3015CN
laser power	1000W 2000W 3000W 4000W (Optional)
Dimensions	4600*2450*1700mm 7999*3048*1880mm
working area	3000mm x 1500mm 6000mm x 2000mm
Repeat positioning accuracy	±0.02mm
Max speed	120m/min
Max acceleration	1.0G
Voltage and frequency	380V/50Hz/60Hz/60A

ATS LF3015CN 1Kw/2Kw/3Kw/4Kw/5Kw/6Kw

Technical Specifications



Autofocus Laser Cutting Head

Without Manual Focusing

The software automatically adjusts the focusing lens to realize automatic perforating and cutting plates of different thickness. The speed of automatically adjusting focus lens is ten times of the manual adjusting.

Bigger Adjustment Range

Adjustment range -10 mm~ +10mm, precision 0.01mm, suitable for 0 ~ 20mm different types of plates.

Long Service Life

Collimator lens and focus lens both have water-cooling heat sink which reduces the temperature of the cutting head to improve the life of the cutting head

ATS LF3015CN 1Kw/2Kw/3Kw/4Kw/5Kw/6Kw

Technical Specifications



Independent Control Cabinet
Dust-proof

All electrical components and laser source are built-in to the independent control cabinet with a dust-proof design to prolong the lifespan of the electrical components.

Automatic Thermostat

The control cabinet is equipped with air conditioner for automatic constant temperature. This can prevent excessive temperature damage to components in summer.

ATS LF3015CN 1Kw/2Kw/3Kw/4Kw/5Kw/6Kw

Technical Specifications



The Segmented Rectangular Tube Welded Bed

The internal structure of the bed adopts the aircraft metal honeycomb structure, which is welded by a number of rectangular tubes. Stiffeners are arranged inside the tubes to increase the strength and tensile strength of the bed, it also increases the resistance and stability of the guide rail so as to effectively avoid the deformation of the bed.

High strength, stability, tensile strength, ensuring 20 years of use without distortion; Thickness of rectangular pipe wall is 10mm and weights 4500 kg.

ATS LF3015CN 1Kw/2Kw/3Kw/4Kw/5Kw/6Kw

Technical Specifications

New beam

The Third Generation Aviation Aluminum Beam



Detail

Higher strength

454

Hardness Tester

VS

3rd Generation Aviation Aluminum Beam

Old beam

1st generation steel beam



• Slow speed • Weight

$\text{Steel Beam} = \text{Aluminum Beam} \times 2$

2nd generation cast aluminum



Lower strength

Sand hole

304

Hardness Tester

It is manufactured with aerospace standards and formed by 4300 tons press extrusion molding. After aging treatment, its strength can reach 6061 T6 which is the strongest strength of all gantries. Aviation aluminum has many advantages, such as good toughness, light weight, corrosion resistance, anti-oxidation, low density, and greatly increase the processing speed.

ATS LF3015CN 1Kw/2Kw/3Kw/4Kw/5Kw/6Kw

Machine Advantage



Stainless Steel Protection Design
The operating area adopts a 304 stainless steel design to prevent high temperature cutting sparks from damaging the machine's surface.

ATS LF3015CN 1Kw/2Kw/3Kw/4Kw/5Kw/6Kw

Machine Advantage



Transmission And Precision

Equipped with Japan YASKAWA servo motor, Hiwin rail guide and France Motor reducer. The positioning accuracy of the machine can be 0.02mm.

ATS LF3015CN 1Kw/2Kw/3Kw/4Kw/5Kw/6Kw

Machine Advantage



IPAD Designing Screen

Use the high
definition
toughened
glass screen,
more exquisite
and delicate,
the operation
is smoother.



Spares

CO2 Laser tubes

Power Supply

Lens

Mirror

Water Switch

Chiller

DC Power Supplies

Spindles

CO2 Laser Tubes

RECI	
POWER	MODEL
30 WATTS	W08
90 WATTS	W 2
100 WATTS	W4
130 WATTS	W6
150 WATTS	W8
180 WATTS	W10
75 WATTS	T1
90 WATTS	T2
100 WATTS	T4
130 WATTS	T6
150 WATTS	T8

CEREMIC LEE	
POWER	MODEL
80 WATTS	G2
100 WATTS	G3
130 WATTS	G4
150 WATTS	G6

YONGLI	
POWER	MODEL
80 WATTS	R3
100 WATTS	R5
130 WATTS	R7
150 WATTS	R9

Air Compressor

Model-ACO 009D

Weight-4.7kg

Frequency-50 to 60 Hz

Voltage :110-120/220-240

Brand :Hailea Power 112 W



24 Volt DC Power Supply

- Brand Hengfu
- Input Current:3.2A/115V, 1.6A/230V
- Weight:0.71 K
- Dimensions:199 x 110 x 50mm
- Efficiency: 84%
- Operating Temperature-20 to 70 Deg C



CNC ROUTER Dust Collector

Airflow (m3/h or CFM) 500-900 CFM

Brand: ATS

Color: White Voltage: 115-240 V

Frequency: 50-60 Hz

Standard Bag Filtration 2-3microns



Co2 Laser Controller motion controller set



HMI Cable



U-Disc Cable I



U-Disc Cable II



Network Cable II



Network Cable I



USB Cable



Specifications

Usage/Application : Laser Engraving & Cutting Control System

Model:Ruida RDC644 5G

Brand: Cloudray

Motor Control Signal: Differential Output, TTL Level, Drive Capability 20 m A

Motor Control Pulse FrequencyMax.500 KHZ

Analog Laser Control Signal0 ~ 5V Tracing Adjustable Auto

USB:Max. transmission rate is 12M bps Interpolation

Interpolation :Linear/circular arc/B spline, accuracy + / - 0.5 pulse

Output: 4-channel, photoelectric isolated OC gate output; max.drive capability is 500mA

Input 4-channel, photoelectric isolated input, TTL level

CNC Router Controller Weihong _NK105





Specifications

- 1) It is a 3-axis motion controller for cnc router.
- 2) Separated Design Protect control parsing module to the largest extent.
- 3) Internal speed parameters are optimized, and problems like rag and chatter mark during machining are solved. Setting of short line speed-limit parameter effectively increases machining speed and precision.
- 4) Support English and Chinese language.
- 5) Break point resume.
- 6) 128M RAM, 256M Flash memory.
- 7) Support 8 gears of spindle speed.

Laser Blower

Specification:

- Material Cast Iron
- Fan Speed 1000-2000 rpm
- Voltage 240 V
- Rated Power 2.6 kW
- Frequency 50-60 Hz
- Usage/Application Air Blower



CNC Controller Richauto DSP A11S





Specifications

- Brand :Richauto
- Control Axis Mode:3 axis
- Drive System :Step motor/Servo motor
- Product Code:A11
- CPU :DSP
- Internal Memory:512MB
- Display Screen :128*64mm Monochrome LCD
- Communication Port : U disk USB cable
- Min Input Unit : 0.001mm
- External Power Supply Voltage :24V DC
- Max Pulse Frequency :1M/S
- Standard Configuration : DSP Handle,50 core cable USB cable,8 I/O Wiring board,data CD

P2450 WATER PUMP

Power: 50 W

Pressure: 18 PSI

Voltage: DC 24V

Brand: S & A

Usage/Application: Used for CW5000, CW5200, etc

CW5200 Laser Water Chiller

Flow Rate: 13 L/Min



PROXIMITY SWITCH SENSOR

Brand: Riko

Model Number: SN04-N

Wire Type DC 3 Wire Type

Theory: Inductance Sensor

Output Type: NPN, NO

Sensing Distance: 4mm Working

Voltage : 10-30V DC

Response Frequency: 500Hz max

Indicator: Red LED

Size: 36 x 18 x 18mm

Hole Size: 0.9 x 0.4cm

External Material: ABS Resin

Net Weight: 34g



LEAD SHINE 3 PHASE STEPPER MOTOR

Brand:Leadshine

Current:5.8A

Phase:3

Weight0.75kg

Step Angle:1.2 Degree

Dielectric Strength: 500VAC 1Min

Insulation Class: B

Radial Play: Max.0.06mm (Load 450g)

Match Drives: 3DM580 / 3DM683

Ambient Temperature:-10 to +50 Deg C

Frame Size: NEMA23

Length: 76mm

Holding Torque: 1.3 N.m

Shaft Size: 8mm



LEAD SHINE 2 PHASE STEPPER MOTOR

Model Number:86HS85D
Brand:Leadshine
Phase:2
Weight:4 Kg
Step Angle:1.8 Deg
Rotor Inertia:0.03965 oz-in-sec²
Frame Size: NEMA 34
Holding Torque: 8.5 Nm
Number of Leads:4
Shaft Size& type: 0.500 inch (12.700 mm) & Single
Phase Current: 6 A
Inductance 4.2 mH
Resistance 0.6 Ohm
Length 4.65 inch (118 mm)



HONEYCOMB STEEL STRUCTURE

Specification:

Material: Steel

Color: Black

Usage/Application: Honeycomb Structure

Shape: Square, Rectangle

Surface: Finish Color Coated ,Polished



EMERGENCY STOP SWITCH

Brand:YIJIA

Model Number:LA38-11ZS / STOP Power/ Voltage440 V

Contact Material:Silver Contacts

Dimension:78 x 29 x 32mm

Open Hole:22-30 mm



LEAD SHINE EM542S MICRO STEPPING DRIVE

- Phase2
- Weight250 g
- Dimension118 * 75.5 * 25 mm
- BrandLeadshine
- Model NoEM542S
- Control ModeStep & Direction,CW & CCW
- Max Input Frequency: 200 KHz
- Input Voltage Range: 20 - 50 VDC
- Suggested Power Supply Voltage Range: 24 - 48 VDC
- Software Cofig Resolution Range: 200 - 512,000 (increased by 200)
- DIP Switch Resolution Settings:
200,400,800,1600,3200,6400,12800,25600,1000,2000,4000,5000,8000,10000,20000,25000
- DIP Switch Current Configurations:
1.0A,1.5A,1.9A,2.4A,2.8A,3.3A,3.8A,4.2A
- Logic Current Range: 7 - 16 mA (10mA typical)
- Communication Type: RS232 for tuning
- Idle Current Percentage: 50% or 90%



LEADSHINE DM860 MICROSTEPPING DRIVE

Specification:

Weight Approx. 620g (21.7oz)

Humidity 40%RH - 90%RH

Brand Leadshine

Model Number DM860

Output Current 1-7.2 A

Input Voltage 24-80 VDC

Logic Signal Current: 7-16 mA

Pulse Input Frequency: 0-200 kHz

Pulse Width: 2.5 μ S

Pulse Voltage: 5VDC

Cooling: Natural Cooling or Forced cooling

Ambient Temperature: 0 - 50 Deg C

Operating Temperature: +70 Deg C Max

Storage Temperature: -20 to 65 Deg C

Vibration: 5.9m/s 2 Ma



THE PARAMETERS OF MODEL T CO2 LASER TUBE

Model Namez	Length (mm)	Mounting Position (mm)	Diameter (mm)	Ignition Voltage (KV)	Recommended Current (mA)	Target Power (W)	Max Power (W)
T1	1110	240	65	19	22	75	90
T2	1250	260	65	19	24	90	100
T4	1400	280	65	24	26	100	130
T6	1650	320	65	30	28	130	160



Laser Power Supply 60 v

POWER: 60

USAGE/APPLICATION :LASER MACHINE

MODEL NAME/NUMBER: HY T60

VOLTAGE:60

BRAND : HY



The Parameters of Model W CO2 Laser Tube

Model Name	Length (mm)	Mounting Position (mm)	Diameter (mm)	Ignition Voltage (KV)	Recommended Current (mA)	Target Power (W)	Max Power (W)
W1	1100	240	80	19	22	75	90
W2	1250	260	80	19	24	90	100
W4	1400	280	80	24	26	100	130
W6	1650	320	80	28	28	130	160
W8	1850	320	90	30	28	150	180

Input	Input Voltage	AC220V (Need AC110V)
	AC frequency	47 - 440HZ
	Max Input power	550W
	Max Input current	5A
Output	Max output voltage	DC40KV
	Max output current	DC28mA
Efficiency		>/=90%(Full load)
MTBF		>/=10000 Hours
Response speed		≤ 1ms (Time from the TTL Signal is given to the output current up to 90% pre-setting current)
Withstand Voltage		Input-Output, Input-Enclosure: AC1500V 10mA 60S, Output cathode is connected with enclosure.
Environment		Operating temperature: (-10-40)degree Celsius,Relative humidity: ≤90%
Cooling		Forced air cooling (fan cooling)

LASER POWER SUPPLY 100 W

Usage & Application: Laser Machine

Model Name/Number: HY T100

Frequency: 50-60 Hz

Voltage: 230 V

Power: 100 W



Laser Power Supply 80 v

Usage & Application: Laser Machine

Model Name/Number: HY T80

Frequency: 50-60 Hz

Voltage: 230 V

Power: 80 watt



Laser Power Supply 120 W

Usage & Application: Laser Machine

Model Name/Number: HY W120

Frequency:

Voltage:

Power:



Laser Power Supply 150 W

Usage & Application: Laser Machine

Model Name/Number: HY T 150

Frequency:

Voltage:

Power:



Input	Input Voltage	AC220V or AC110V	
	AC frequency	47—440HZ	
	Cold Surge Current	≤60A(AC220V Input)	≤30A(AC110 Input)
	Current Leakage	≤0.7mA (AC220V Input)	≤0.4mA(AC110V Input)
Output	Max Output Voltage	DC 50KV	
	Max Output Current	DC 38mA	



SERVICES

1. CNC Router & Laser Machines Repair & Service

- a) CNC Router Maintenance
- b) CNC Refurbishment / CNC Retrofit
- c) Spindle Repair

2. Miscellaneous problems

- a) Bearing damage
- b) Wear at the cutting point
- c) Coil damage
- d) Transmitter failure
- e) Insufficient clamping force
- f) Leakage of oil or coolant
- g) Pronounced increase in temperature (overheating)
- h) Heavy vibrations
- i) Clamping system damaged

3. Laser refill Refurbishment

4. Component Repair

5. Installation and relocation Services



CNC Router & Laser Machines Repair & Service

ATSLaser offers a variety of space saving CNC routers that would meet your specific application requirements along with which they offer the unique CNC Router Maintenance.

Spindle Repair

Spindle is an essential and superior device that makes production task efficient and fast. If you face any issues with your repaired spindle, you can hire the reliable repair team.



Miscellaneous Repairs

- a) Bearing damage
- b) Wear at the cutting point
- c) Coil damage
- d) Transmitter failure
- e) Insufficient clamping force
- f) Leakage of oil or coolant
- g) Pronounced increase in temperature (overheating)
- h) Heavy vibrations
- i) Clamping system damaged

We are the most effective CNC experts offering manufacturer level services for lots of CNC machines. Along with this, we also have wide experience in designing different types of laser machines and tools. Our firm not only provides durable and extraordinary machines, but also allows our customers to get highly trusted repair services or solutions.



CNC Refurbishment / CNC Retrofit

CNC routers are the specialized and highly sophisticated tools which are properly controlled by a system computer. The useful devices create some troubles if you are not maintaining it properly.

Most of the people have lots of troubles while getting the desired consistent service or results on their existing CNC Router, so they are seeking for the perfect service or assistance. In order to meet the requirements, ATS Laser comes with a team of highly skilled and talented professionals who have the capability to troubleshoot the CNC routers. Our completely trained and friendly technicians are having more experience and expertise in repairing field, so they will surely bring you high quality and most reliable troubleshooting services. We service lots of brands also which will help us to make machine running and back up successfully.

Whether you have a minor modification, or a complete machine overhaul, ATS Laser is one of India's leading machine refurbishment & CNC retrofit specialists.

Laser Refill Refurbishment



ATS laser the professional team available to offer high quality services. In general, we will refill your tube to produce high quality output at the same time we improve the power of your system by using advanced technology.



Facilities Management or AMC

CNC Machines require highest form of management and maintenance for the higher performance of the machine and ATSLaser team brings you the high standard maintenance service.

Strategizing the longer term building the equipment based on managing the facilities is most important. The main goal of the Facilities Management is to manage proactively the growing list of maintenance that is associated with overseeing the facilities. Planning the facility success would be convenient for increasing the performance of the devices in the extensive manner so it is necessary to look at the future expectations, present backlog and past needs. Facilities Management can be accomplished with determining current facilities status so that it would be planning or scheduling for the maintenance accordingly.

Component Repair



To restore the function, fit and form of your essential machine components, you can utilize the world-class and professional repair services offered by experienced repair team.

To restore the function, fit and form of your essential machine components, you can utilize the world-class and professional repair services offered by experienced repair team.

In this highly competitive world, every business individual wants to run and develop their company successfully. If you want to reach your goal soon, you can maintain your CNC machines properly. Otherwise, it will affect the major components of your machine. In order to replace or repair the component, you can hire the industry leader, popularly known as ATS Laser.

A decorative graphic on the left side of the slide, consisting of white lines and circles on a blue background, resembling a circuit board or a stylized tree structure.

Installation and Relocation Services

Our experienced team not only specializes in manufacturing and designing of products. Along with this, we can arrange full factory moves as well as our team use innovative technologies to simply relocate your machine tools. With this, you can easily meet your industrial application needs inside your factory. Usually, we can consider unique methods to handle the problems, for large machine tools our team takes special care especially we employ the latest and innovative techniques that help to ensure digital machine levels with this you can get accurate and speedy installation.